



STAY BACK AND STAY SAFE

Chris Tackmann, General Manager & CEO

Working with electricity can be a dangerous job, especially for line workers. That’s why for Oakdale Electric Cooperative (OEC), safety is one of our top priorities. Over time, we have created a culture of safety for our employees and the community.

Our mission is to provide members with safe, reliable, superior, and competitively priced energy services. Yes, we strive to deliver affordable and reliable electricity to you, but equally important, we want our employees to return home safely to their loved ones. This requires ongoing focus, dedication, and your continued help.



Distractions can be deadly.

We appreciate your kindness and interest in the work of our crews; however, we ask that you stay back and let them focus on their tasks. Even routine work has the potential to be dangerous, and it takes their full attention and that of their fellow line workers. Distractions can have deadly consequences. If a line worker is on or near your property during an outage, for vegetation management, or for routine maintenance, please allow them ample room to work. These

small accommodations help protect our crews and you.

If you have a dog, try to keep it indoors while line workers are on or near your property. While most dogs are friendly, some can be defensive of their territory and unfortunately unable to distinguish between a burglar and a utility worker.

We recognize that for your family’s safety, you want to make sure only authorized workers are on or near your property. You will recognize OEC employees by their uniforms and the service trucks with our name and logo on them. Feel free to also check with our office if you have questions about who is on your property.

Slow down and move over.

In addition to giving line workers some space while they are near your property, we also ask that you move over or slow down when approaching a utility vehicle on the side of the road. This is an extra barrier of safety to help those who help all of us.

Doing these few things, can make a big difference in performing their work safely. We appreciate your help with this.

ATTENTION MAUSTON AREA MEMBERS

Badgerland Utility Solutions LLC (Camp Douglas, WI) has been contracted by Oakdale Electric Cooperative to complete a full inspection, including testing and performing required maintenance, to our utility poles beginning in March 2025 to the Mauston area substation.

Beginning in the fall of 2025, Badgerland Utility Solutions LLC will start testing our underground cabinets that include green metal transformers and junction boxes, in the Mauston area substation.

During inspections, it is necessary for Badgerland Utility Solutions LLC employees to have a clear path to our utility equipment. We frequently find fences, plantings, or hardscape materials placed around the equipment. Please relocate (or remove) all materials from an area within 12 feet from the front (side with the lock) and four feet on all other sides of the pad-mounted underground utility equipment. At the time of inspection, any such landscaping within this area may be subject to removal by the contractor.

Call 811 to schedule a free location of underground cables before digging around the utility equipment.

Badgerland Utility Solutions LLC will have Oakdale Electric Cooperative’s name on magnetic signs as identification. Much of the utility equipment to be inspected is located near the main public road but may have to check and repair equipment located in members’ lawns or near homes. Now is a good opportunity to inform all family members of this upcoming inspection.

For any questions or concerns about this project, contact us at 800-241-2468.



MEMBER PHOTO CONTEST

“Life in Rural Wisconsin”

The Oakdale Electric Cooperative (OEC) photo contest for members' photos to be featured in our 2026 calendar is now open. Winning photos may be used in future newsletters or cooperative publications. The contest runs until August 15, 2025.

Photo Contest Criteria:

- Photos must be taken within OEC's service area.
- Photos should capture life in rural Wisconsin (seasons, wildlife, landscape, power lines, people, etc.).
- Photos must have a horizontal (landscape) orientation.
- Photos can be in color or black and white.
- Only high-resolution photos can be used. Photos must be at least 300 dpi.

**\$25 Co-op
Cash to picture
winners & \$50
Co-op cash to
cover winner!**

Photo Contest Rules and Details:

- Contest will run from March 1, 2025 until August 15, 2025; however, submitted photos can be taken outside of this date range.
- Three (3) photos per member will be accepted.
- All OEC members 18 years old and over are eligible to submit photos.
- An OEC member under the age of 18 years old is eligible to participate, but must submit a parent/guardian form with entry.
- A completed entry form must accompany each photo.
- Member must own rights to photo.
- OEC employees will determine the winning photos.

Photo Contest Entry Options:

- **Upload** using the Photo Contest Entry Form, found on www.oakdalerec.coop, under the Member Benefits tab.
- **Mail** to P.O. Box 40, Oakdale, WI, 54649. (photo(s) must be 8"x10" in size and at least 300 dpi)
- **Drop off** at Oakdale Electric Cooperative Office —489 N Oakwood St., Tomah. (photo(s) must be 8"x10" in size, and at least 300 dpi)





FUELING SPRING SAVINGS

15 Lucky Members Will Receive a \$50 Gift Card

Not only do we get to save daylight starting March 9, but we are also fueling even more savings by giving away (15) \$50 Kwik Trip fuel only gift cards to members who submit a qualifying energy-saving incentive between March 1 and May 30, 2025.

Incentive forms must be received by the co-op by 4:00 p.m. Friday, May 30, 2025. Drawing will take place Monday,

June 2, 2025. Winners will be contacted via phone and be mailed their gift card.

Employees, directors, as well as immediate family of Oakdale Electric Cooperative, are not eligible.

View incentive forms at www.oakdalerec.coop/incentives or call 608-372-4131 Monday through Friday from 7:30 a.m. to 4:00 p.m. and ask for Maribeth.

ENERGY STAR Appliances & Recycling Incentives

\$50—All-in-One Washer/Dryer Combo

\$25—Clothes Dryer, Clothes Washer, Dehumidifier, Dishwasher, Freezer, Inductive Range, and Refrigerator

\$25—RECYCLING Freezer, Refrigerator, and Room A/C Unit

Lighting Incentives

\$.50/bulb—Light Emitting Diode (LED) Bulbs (min. 5 bulbs). Quantities less than five bulbs do not qualify.

\$.50 per 800 lumens—Light Fixture

\$5—Occupancy Sensor

\$5—LED Exit Sign

Electric Water Heater Incentives

\$150/unit—50-79 gallon

\$300/unit—80 gallons or larger

\$300/unit—Heat Pump Water Heater - 50 gallons or larger

Must be on Oakdale Electric Cooperative's load management program and have a control installed. A copy of the receipt is required. A controlled water heater qualifies for a \$3 monthly credit, unless you are on the dual fuel rate. *A control is not required for a heat pump water heater.

HVAC

\$200/ton—Heat Pump – Air Source & MiniSplit

\$200/ton—Heat Pump – Commercial Air Source & PTHPs

\$400/ton—Heat Pump – Geothermal

\$35/unit—New Furnace w/Efficient ECM Blower Motor

Ag, Commercial, Industrial Incentives, and Home Energy Audit Incentives are available. View all available incentives at www.oakdalerec.coop/incentives.

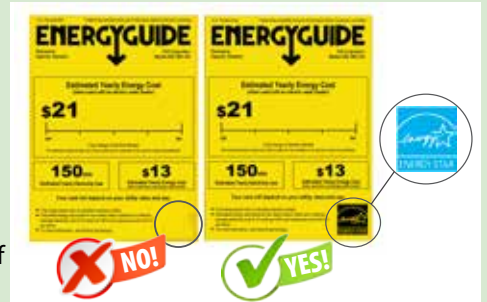
Important Incentive Details

- Incentives must be submitted within **three months** of purchase and installation.
- Incentives are in place through **December 26, 2025**. Funds are limited, so submit the required documentation as soon as possible.
- Incentives will be applied as a credit on an electric account.
- Refer to incentive forms for detailed criteria.
- Incentive program is subject to change without notice.

Know the difference between EnergyGuide and the ENERGY STAR® labels

EnergyGuide

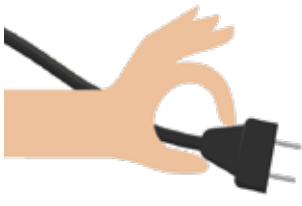
The EnergyGuide label is a required label that estimates the annual energy consumption for an appliance. It also provides information about whether that use is above or below the average for that type of product. The dollar amount listed is the estimated yearly operating cost based on the national average cost of electricity.



ENERGY STAR®

The ENERGY STAR® label is the government's symbol for energy efficiency. It helps consumers easily recognize highly efficient products, homes, and buildings that save energy and money, and help protect the environment. The ENERGY STAR® logo is often incorporated into the EnergyGuide.

Oakdale Electric Cooperative incentives are ONLY available for new ENERGY STAR®-rated appliance purchases. Therefore, when shopping for new appliances and to ensure you're getting the most energy-efficient equipment, search for the ENERGY STAR® label.



PLUGGED

IN

Capital Credit Allocation

Capital credit allocation information will appear on members' electric statements this month.

This Allocation Notice shows the amount earned and credited to your Capital Credit Account for the year 2024.

Oakdale Electric Cooperative is a member-owned, not-for-profit provider of electric energy and other valuable services. Any earnings (revenues less expenses) left over at the end of the year are allocated to the members of the cooperative as Capital Credits.

Your Capital Credits are an investment in the cooperative and represent your share of ownership. Capital Credits accumulate in your name and are refunded by action of the cooperative's Board of Directors as the financial condition of the cooperative warrants.

Members with several accounts receive one combined notice accumulated under one member number.

If you have any questions, please contact our office at 800-241-2468.



Tina Von Haden
Billing & CIS Specialist

Plant the Right Tree in the Right Place

Trees can beautify our neighborhoods, and when planted in the right spot, can even help lower energy bills. But the wrong tree in the wrong place can be a hazard...especially to power lines.

For more tips on smart tree planting in your community, contact Oakdale Electric Cooperative or visit www.ArborDay.org.

LARGE TREES

Height/spread of more than 40 feet, such as:

- Maple
- Birch
- Oak
- Sweetgum
- Spruce
- Linden
- Pine

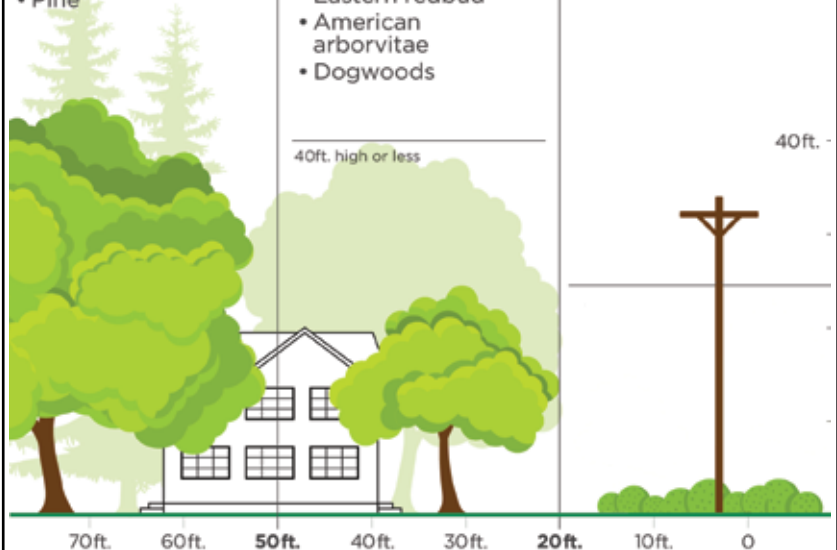
MEDIUM TREES

Height/spread of 25 to 40 feet, such as:

- Washington hawthorn
- Goldenrain tree
- Eastern redbud
- American arborvitae
- Dogwoods

SHRUBS

Avoid planting within 20 feet of power lines. When planting within 20 feet is unavoidable, use only shrubs.



Always call 811 before you dig to locate any buried lines.

Source: The Arbor Day Foundation and the National Rural Electric Cooperative Association

Chris Tackmann, General Manager & CEO

P.O. Box 40, Oakdale, WI 54649
608-372-4131 • 800-241-2468

[in](#) [f](#) [X](#) [@](#) info@oakdalerec.coop

Jackie McGlin, Editor



Oakdale Electric Cooperative

Your Touchstone Energy® Partner

Office Hours: Monday–Friday, 7:30 a.m.–4:00 p.m.
24-Hour Emergency Power Restoration: 800-927-6151
Toll-free Online Bill Payment 855-938-3610

Diggers Hotline: For underground cable locates and power line clearance information, call 800-242-8511.