

Since 1940

# WISCONSIN ENERGY

## Cooperative

April 2025 NEWS



Oakdale Electric Cooperative

Your Touchstone Energy® Partner



Annual Meeting

**Saturday, April 26, 2025**

Tomah Recreation Park - Recreation (gold) Building  
(see inside cover page for details)

*Rooted in the Community*



# CALL AND NOTICE

## of Annual Meeting of Oakdale Electric Cooperative

The Annual Meeting of the members of Oakdale Electric Cooperative will be held at 9 a.m., Saturday, April 26, 2025, at Tomah Recreation Park in the Recreation (gold) Building, with registration beginning at 8 a.m.

Action will be taken on the following:

1. Reading of the notice of the Meeting and proof of the due publication of mailing thereof.
2. Reading of the unapproved minutes of last year's meeting of the members and taking of necessary action thereon.
3. Election of a director from District #3 (comprised of the Townships of Greenfield, Angelo, Adrian, Tomah, Wells, Ridgeville, Wilton, Clifton, Glendale) for a three-year term to fill the vacancy of the term of Gregory Eirschele (incumbent), 18432 State Highway 21, Tomah, WI 54660.
4. Election of a director from District #6 (comprised of the Townships of Plymouth, Lindina, Lemonweir, Kildare, Wonewoc, Summit, Seven Mile Creek) for a three-year term to fill the vacancy of the term of Jonathan Williams (incumbent), W4031 Pfaff Lane, Lyndon Station, WI 53944.
5. Reports of officers, directors, committees, and employees, summarized in the Annual Report previously distributed to membership and published in the Annual Meeting webpage.
6. Such other business, regular or special, which may come before said meeting.
7. Adjournment.

*The 2024 Annual Meeting minutes can be viewed at [oakdalerec.coop](http://oakdalerec.coop).*

## TABLE OF CONTENTS

- Notice of Annual Meeting – inside front cover
- Program – inside front cover
- GM & CEO and Board Chairman Message – page 15
- About Oakdale Electric Co-op – page 16
- Financial Report – page 17
- Youth Opportunities – page 18
- Director Districts – inside back cover

# ANNUAL MEETING PROGRAM

**Saturday, April 26, 2025**

**Tomah Recreation Park –  
Recreation (gold) Building  
1625 Butts Avenue, Tomah**

### 8:00 a.m.

- Registration of Members – Coffee and donuts prior to meeting

### 9:00 a.m.

- Business Session
- Meeting Called to Order – Richard Barrett, Chairman
- Invocation – James Van Wychen, Treasurer
- Certification of Quorum Present
- Approval of Program Agenda
- Notice of Meeting and Proof of Mailing
- Approval of Minutes and Prior Meeting
- Director Election Process – Attorney John Behling
- Presentation of General Manager & CEO and Director reports as summarized in the Annual Report previously distributed to membership – Christopher Tackmann
- Guest Speaker – Joe Mesec, Director of Government Relations, Wisconsin Electric Cooperative Association
- Any Other Business
- Adjournment

## JIMMY JOHN'S GIFT CARD

Receive a Jimmy John's \$10 gift card and cheese and sausage gift bag from Humbird Cheese in Tomah following the meeting.

## DRAWINGS

Decorative lawn ornaments from The Shed in Tomah, a STIHL battery-powered trimmer from Hartje's Farm & Power Equipment in La Valle, and \$750 in bill credits will be drawn to registered members in attendance at the annual meeting.

## GIFTS & FOOD

Enjoy donuts, coffee, juice, and milk prior to the business meeting. Each member account will receive one member gift at registration and a jar of jelly from Black Bear Fruits in New Lisbon.



Chris Tackmann,  
General Manager & CEO



**Oakdale Electric  
Cooperative**  
Your Touchstone Energy® Partner

## MESSAGE FROM YOUR GENERAL MANAGER & CEO AND BOARD CHAIRMAN



Rick Barrett,  
Board Chairman

**W**e hope to see you at our Annual Meeting on Saturday, April 26, 2025, at Recreation Park in Tomah. Registration begins at 8 a.m., and the business meeting starts at 9:00 a.m., please come early for coffee and donuts. Each member account will receive one welcome gift, and following the meeting, all members in attendance will receive a \$10 Jimmy John’s gift card and cheese and sausage gift bag from Humbird Cheese.

In 2024, due to the generosity of Oakdale Electric Cooperative (OEC) membership rounding up your electric bills to the nearest dollar, we were able to award \$92,675 to various organizations in our local communities. Thank you again for your continued support in rounding up your bill.

Oakdale Electric was busy with construction last year and invested nearly \$7.7 million in new construction, electric line upgrades, and 232 new services. The capital budget for 2025 calls for us to invest \$11.3 million in system improvements. Major areas include Clearfield, Germantown, Oakdale, and Clifton. To help improve power capacity, three new substations will start construction this year in the Clearfield, Armenia, and Bear Creek areas. An additional substation will also be upgraded. The substations were originally planned for construction in 2024 but were delayed for various reasons.

Despite a mild winter at the start of 2024, OEC achieved another strong year in both sales and overall financials. Annual kWh sales exceeded 382 million kilowatts, marking one of the highest sales totals in OEC’s history. However, the increased sales were not sufficient to offset rising costs, leading to a slight increase in electric rates. This was primarily due to higher material costs for distribution equipment, increased fuel costs, and a rise in our wholesale power bill.

Currently, we do not anticipate a rate increase in 2025. However, future adjustments may be necessary to continue offsetting rising costs. We want to reassure you that we scrutinize every expense and only make purchases essential for the long-term success of OEC.

In 2024, external auditors once again gave OEC a clean report regarding our financial systems and controls. We are proud of this achievement, along with the continued retirement of capital credits. Last year, OEC returned nearly \$1.3 million in capital credits to our members, and we plan to retire another \$1.4 million in 2025.

You, our members, are an integral part of the cooperative business model. Without your support, feedback, and appreciation, Oakdale Electric Cooperative’s success would not be possible. Thank you!

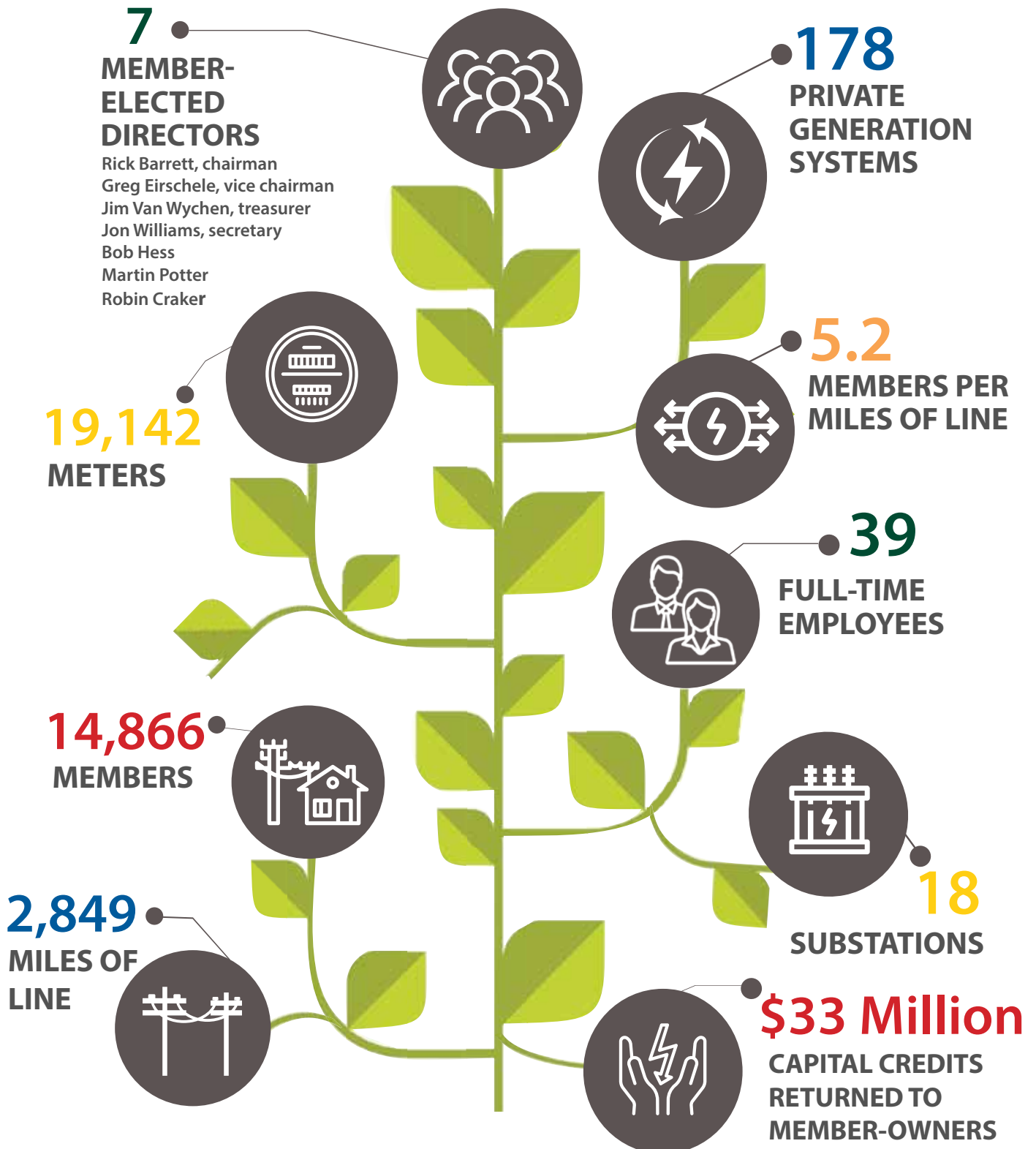
### WE WANT TO HEAR FROM YOU

In April, we are sponsoring a mail survey of a randomly selected sample of our residential members asking for information about your home, appliances, energy efficiency, and opinions regarding a handful of energy topics. If you receive a copy of this survey, we request that you take 10 minutes to complete it and return it to our survey processor in the postage-paid envelope that will be provided or using the online survey link provided. We thank you in advance for your participation.



# OAKDALE ELECTRIC COOPERATIVE

## IS *Flourishing*



# 2024 FINANCIAL REPORT

## STATEMENT OF OPERATIONS

	Dec. 31, 2024	Dec. 31, 2023
Operating Revenue		
Elec Sales Revenue	46,297,997.00	43,649,821.00
Other Elec Revenue	110,903.00	105,174.00
Total	46,408,900.00	43,754,995.00
Operating Expenses		
Cost of Power	29,284,179.00	27,961,440.00
Distribution Expense – Operations	1,934,319.00	1,710,923.00
Distribution Expense – Maintenance	2,082,001.00	1,929,789.00
Administrative & General Expense	3,042,847.00	2,902,600.00
Depreciation Expense	4,330,888.00	4,161,792.00
Tax Expense	546,279.00	503,814.00
Interest on Long-Term Debt	2,475,304.00	2,243,918.00
Other	47,896.00	64,867.00
Total Cost of Electric Service	43,743,713.00	41,479,143.00
Operating Margins	2,665,187.00	2,275,852.00
Non-Operating Margins	414,408.00	842,754.00
DPC Capital Credits	1,485,982.00	1,333,156.00
	4,565,577.00	4,451,762.00
<b>BALANCE SHEET</b>		
Assets		
Net Utility Plant	93,395,519.00	88,853,268.00
Long-Term Investment	22,336,607.00	21,036,097.00
Cash & Temporary Investments	307,464.00	188,371.00
Accounts Receivable	4,846,252.00	3,192,687.00
Materials & Prepayments	2,219,770.00	2,306,880.00
Other Assets & Deferred Debts	573,041.00	613,465.00
Total Assets	123,678,653.00	116,190,768.00
Liabilities & Equities		
Patronage Capital	53,824,952.00	50,541,946.00
Consumer Deposits	254,116.00	238,416.00
Long-Term Debt	59,811,196.00	55,941,401.00
Accounts Payable	3,551,080.00	2,998,684.00
Other Current Liabilities	6,237,309.00	6,470,321.00
Total Liabilities & Equity	123,678,653.00	116,190,768.00



## COMMITMENT TO COMMUNITY IN 2024

Operation Round Up:

**\$92,675**

Scholarships:  
**\$21,500**

Donations & Sponsorships:  
**\$23,700**

*Our 2024 financial records and the reports contained herein have been audited by Bauman Associates, Ltd., Eau Claire, WI.*

## YOUR ENERGY DOLLARS

For every dollar you spend on electricity, two-thirds goes toward the cost of wholesale power.



# 2025 YOUTH LEADERSHIP CONFERENCE



**PARTICIPATE**  
in fun, hands-on, educational activities.



**DISCOVER**  
your leadership skills, and the purpose/value of cooperatives.



**EXPERIENCE**  
a traditional college environment.

July 15-17 | UW-Stout

For students entering their senior year in fall of 2025.

Student's parent(s)/legal guardian must be an active OEC member. All costs covered by OEC, including transportation to and from UW-Stout.

Scholarships available after attending YLC.

**Deadline to sign up is May 30, 2025.**

Interested? Here's how to apply...  
Contact your school counselor or Jackie McGlin at 608-372-8826 or email [jmcglin@oakdalerec.coop](mailto:jmcglin@oakdalerec.coop).

Scan For  
More Info



## Chris Tackmann, General Manager & CEO

P.O. Box 40, Oakdale, WI 54649  
608-372-4131 • 800-241-2468

[in](#) [f](#) [x](#) [ig](#) [info@oakdalerec.coop](mailto:info@oakdalerec.coop)

**Jackie McGlin, Editor**

## CALLING ALL THIRD-GRADERS:

You're invited to participate in the Wisconsin Electric Cooperative Association's

## ELECTRICAL SAFETY POSTER CONTEST

Submit an original poster supporting electrical safety to your local electric cooperative by **April 30, 2025**, for a chance to win a **\$25 gift card!** The top three posters will be entered into the statewide poster contest for a chance to win one of three great prizes:

**1st place – Chromebook**

**2nd place – \$100 Gift Card**

**3rd place – \$75 Gift Card**



Visit [www.weca.coop](http://www.weca.coop)  
for details and  
an entry form.



## Chris Tackmann, General Manager & CEO

P.O. Box 40, Oakdale, WI 54649  
608-372-4131 • 800-241-2468

[in](#) [f](#) [x](#) [ig](#) [info@oakdalerec.coop](mailto:info@oakdalerec.coop)

**Jackie McGlin, Editor**



**Oakdale Electric  
Cooperative**

Your Touchstone Energy® Partner

Office Hours: Monday–Friday, 7:30 a.m.–4:00 p.m.  
24-Hour Emergency Power Restoration: 800-927-6151  
Toll-free Online Bill Payment 855-938-3610

Diggers Hotline: For underground cable locates and power line clearance information, call 800-242-8511.

# DIRECTOR DISTRICTS



**Bob Hess**  
District 1



**Martin Potter**  
District 5



**Jim Van Wychen**  
Treasurer  
District 2



**Rick Barrett**  
Chairman  
District 4



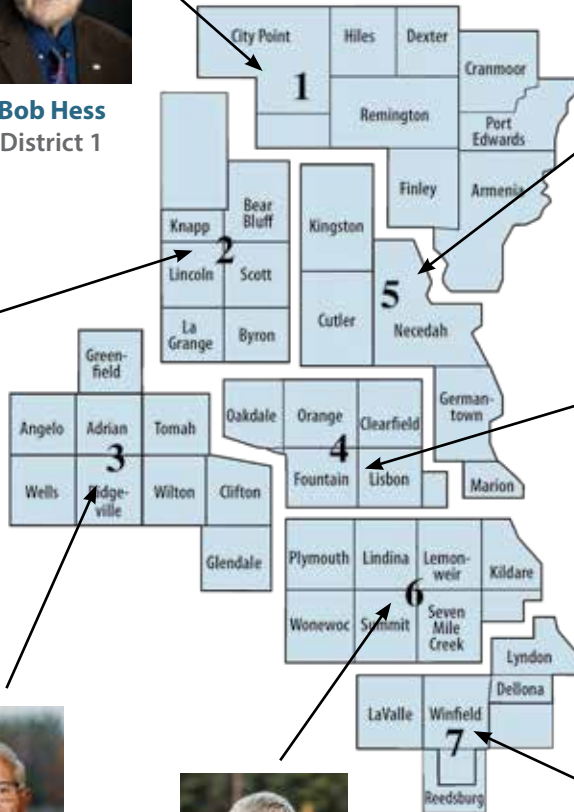
**Greg Eirschele**  
Vice Chairman  
District 3



**Jon Williams**  
Secretary  
District 6



**Robin Craker**  
District 7



## MISSION

Oakdale Electric Cooperative is dedicated to providing our members with safe, reliable, superior, and competitively priced energy services.

## VISION

Oakdale Electric Cooperative strives to enhance the quality of life for our members, while exceeding member expectations.

## VALUES

- Safety
- Integrity
- Innovation
- Environmental stewardship
- Accountability
- Open, honest communication
- Commitment to members, community, and employees

## The Role of the Cooperative's Board of Directors



14,866 OEC Members – Just like you

Your Vote



7-Member Board of Directors

Strategic Direction & Oversight



General Manager & CEO

Oversight of OEC Employees



Day-to-day Co-op Operations

Co-op members influence the way in which a cooperative is governed and operated by electing a board of directors to act on their behalf.

The co-op board of directors sets the overall direction for the cooperative.

The co-op's general manager & CEO and staff are responsible for the day-to-day operation of the co-op.



# 7 Cooperative Principles

- 1 Voluntary & open membership
- 2 Democratic member control
- 3 Members' economic participation
- 4 Autonomy & independence
- 5 Education, training & information
- 6 Cooperation among co-ops
- 7 Concern for community